

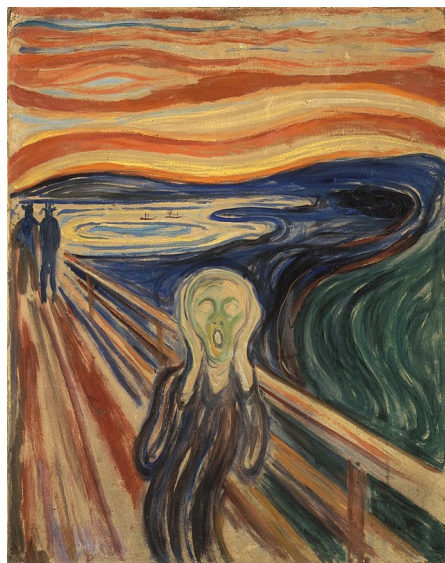
Art Focus:	Be Yourself—Drawing and	Year 4	Term: 1B
-------------------	-------------------------	---------------	-----------------

Key Vocabulary– Drawing	
Composition	How the different elements of artwork are arranged.
Observational drawing	Drawing from what you can see.
Scene	A landscape.
Muted colours	Colours which are not bright.

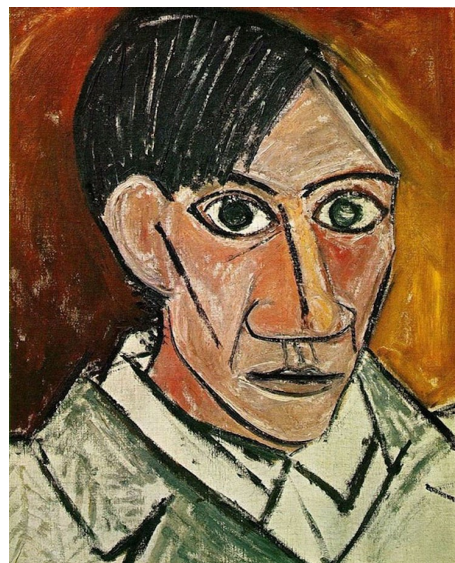
Key Vocabulary– Painting	
Tone	The lightness or darkness of a colour.
Shade	A mixture of pure colors to which only black is added.
Tint	A mixture of pure colors to which white is added.

Key Artists

Edvard Munch



Picasso



Vincent Van Gogh

